

Proliferation of retinal pigment epithelial cells induced by (R, R)-XY-10 and (S, S)-XY-10 and their action mechanisms

Yu-Wen Cheng¹, Yu-Liang Wang², Yi-Hua Zhang², Si-Xun Peng², George C Y Chiou¹

¹Institute of Ocular Pharmacology, College of Medicine, Texas A&M Health Science Center, College Station, TX 77843, USA

²Center of Drug Discovery, China Pharmaceutical University, Nanjing 210009, Jiangsu Province, China

Correspondence to: George C Y Chiou. Institute of Ocular Pharmacology, College of Medicine, Texas A&M Health Science Center, College Station, TX 77843, USA. Chiou@medicine.tamhsc.edu

Received: 2009-06-19 Accepted: 2009-09-04

Abstract

• **AIM:** To investigate the mechanism of proliferation effect induced by (R, R)-XY-10 and (S, S)-XY-10 on retinal pigmented epithelial cells (ARPE-19).

• **METHODS:** Human retinal pigmented epithelial cells (ARPE-19) and human umbilical vein endothelial cells (HUVECs) were used to investigate the effect of (R, R)-XY-10 and (S, S)-XY-10 on cell growth, and their mechanisms of proliferative action by using ERK, AKT, PI3K, Protein kinase C (PKC) and Nitric oxide synthase (NOS) inhibitors.

• **RESULTS:** (R, R)-XY-10 and (S, S)-XY-10 dose-dependently increased ARPE-19 cell proliferation, but not on HUVECs. When treated with proliferative inhibitors, H7 (5 μmol/L), hypericin (20 μmol/L), PD98059 (2 μmol/L), LY294002 (50 μmol/L), SH-5 (10 μmol/L) and L-NAME (100 μmol/L), the proliferative effect was reduced by H7, hypericin, PD98059 and LY294002, but not by SH-5 and L-NAME.

• **CONCLUSION:** (R, R)-XY-10 and (S, S)-XY-10 can induce cell proliferation through MAPK and PI3K dependent pathway.

• **KEYWORDS:** age-related macular degeneration; (R, R)-XY-10; (S, S)-XY-10; ARPE-19 cells; human umbilical vein endothelial cells; proliferation

DOI: 10.3969/j.issn.1672-5123.2009.09.001

Cheng YW, Wang YL, Zhang YH, Peng SX, Chiou GCY. Proliferation of retinal pigment epithelial cells induced by (R, R)-XY-10 and (S, S)-XY-10 and their action mechanisms. *Int J Ophthalmol (Guoji Yanke Zazhi)* 2009;9(9):1641-1645

INTRODUCTION

The retinal pigmented epithelium (RPE) is a monolayer cell located between the retinal photoreceptors and the choroidal blood vessels^[1,2] that plays a key role in the mechanical and metabolic support of the photoreceptors^[3]. In

normal eyes, there is very little RPE cell turnover, and most RPE cells survive for an individual's lifetime. RPE cell death is accompanied by underlying choriocapillaris atrophy and overlying retinal thinning, ultimately resulting in decreased visual acuity^[4]. Therefore, RPE^[5] cell is the main element of some ocular diseases, such as proliferative vitreoretinopathy (PVR), uveitis and age-related macular degeneration (AMD)^[6,7]. AMD exists in both non-exudative and exudative forms. The non-exudative form involves atrophy of the central macula with a slow and progressive loss of central vision. The exudative form is characterized by the growth of new blood vessels through Bruch's membrane into the subretinal space, and the development of choroidal neovascularization (CNV) through an angiogenic process. The progression of AMD is associated with retinal inflammation and drusenogenesis^[4,8]. Moreover, it has been shown that the RPE cells of atrophic (dry form) AMD patients are significantly higher on cell injury and death^[9].

The Mitogen-activated protein kinases (MAPKs) are ubiquitous enzymes, which play a pivotal role in variety of cellular functions in many cell types^[10,11]. Three major mammalian MAPK subfamilies have been described: ERK1 and 2, the c-Jun NH-2 terminal kinases (JNK), and the p38 kinases. Among these, ERK activation is typically associated with cell survival. Proliferation and differentiation^[10,12]. Phosphatidylinositol 3-kinase (PI3K) is a family of enzymes that phosphorylate phospholipids which engage various other enzymes such as Akt (protein kinase B). It is well established that activation of PI3K plays an important role in promoting cell survival and proliferation in numerous cell systems^[13]. Activation of PI3K results in recruitment of the serine-threonine kinase Akt, one of the downstream targets of PI3K, to the plasma membrane, where it is activated by the 3-phosphoinositide-dependent kinase PDK1. Activated Akt affects the activity or abundance of a number of transcription factors linked to cell survival and proliferation^[13].

On this study, we want to investigate the effect of (R, R)-XY-10 and (S, S)-XY-10 induced proliferation on ARPE-19 cells and the involvement of MAPK and PI3K and Akt pathway.

MATERIALS AND METHODS

Materials (R, R)-XY-10 and (S, S)-XY-10 were synthesized (Figure 1). H-7 (1-(5-Isoquinolinesulfonyl)-2-methylpiperazine, 2HCl), Hypericin (C3H16O8), PD98059 (C16H13NO3), LY294002 (2-(4-Morpholinyl)-8-phenyl-

4H-1-benzopyran-4-one, SH-5 (C29H59O10P), MTT 3-(4, 5-dimethylthiazol-2-yl)-2, 5-diphenyl tetrazolium bromide were purchased from Sigma-Aldrich (St. Louis, MO). The chemical structures of (R,R)-XY-10 and (S,S)-XY-10 are presented in Figure 1.

ARPE-19 Cell Culture The human REP cell line ARPE-19 obtained from American Type Culture Collections (ATCC; Manassas, VA) was cultured in Dulbecco's modified essential medium supplement with 100mL/L fetal bovine serum (FBS), 50kU/L penicillin/streptomycin and 2.5mmol/L glutamine at 37°C incubator with 50mL/L CO₂. The cell line is not transformed and has structure and function properties characteristic of RPE *in vivo*. The cells were seeded into 96-well plates, and subconfluent cell monolayers were studied within three to ten passages. Before starting the experimental procedures, the medium was removed and replaced with phenol red-free low-glucose D-MEM supplemented with 1% calf serum, 0.6g/L glutamine, and 1% penicillin streptomycin.

HUVEC Culture HUVECs were purchased from ScienceCell (San Diego, CA) and cultured in low-glucose EBM-2 supplemented with 100mL/L calf serum, EBM-2 including EGM-2 SingleQuots (Clonetics), 2mmol/L glutamine, 100kU/L penicillin, and 100g/L streptomycin in a humidified atmosphere of 50mL/L CO₂, 950ml/L air. The cell line is not transformed and has structure and function properties characteristic of HUVECs *in vivo* [14,15]. These cells were positive for the endothelial cell-specific von Willebrand factor and angiotensin-1-converting enzyme activity. The cells were seeded into 96-well plates, and subconfluent cell monolayers were studied within six to eight passages. Before starting the experimental procedures, the medium was removed and replaced with phenol red-free low-glucose D-MEM supplemented with 1% calf serum, 0.6g/L glutamine, and 1% penicillin streptomycin.

Cell Damage Assay Cultured RPE cells and HUVECs were seeded onto 96-well plates with a cell volume of 1×10^8 cells/L, and were grown to 80% confluence before treatment to prevent contact inhibition. The cells were exposed to the control or various concentrations of (R,R)-XY-10, (S,S)-XY-10 (1, 3, 10, 30, 100mg/L), the culture were then incubated at 37°C for 24 or 48 hours. Cell viability was assessed by using a 3-(4, 5-dimethylthiazol-2-yl)-2, 5-diphenyl tetrazolium bromide (MTT) assay to determine the proportion of living cells in each culture (living cells are those with mitochondrial function of dehydrogenase) [16]. The 96 wells cultures, after exposure to the control or the test compounds for 24 hours, were incubated with 5g/L MTT at dilution of 1:10 base on the volume of culture medium for 3 hours at 37°C. At the end of incubation, the MTT solution was removed, and the cells were dissolved in 0.1mL/well DMSO. The proportion viable cells (those with mitochondria capable of cleaving the MTT molecule to produce the dark purple substance, formazan) was determined by measuring the absorbance(A) of each sample at 570 nm using a SpectraCount plate reader (Packard BioScience, Meridan, CT). Exact cell number was determined using Trypan blue exclusion and a hemacytometer

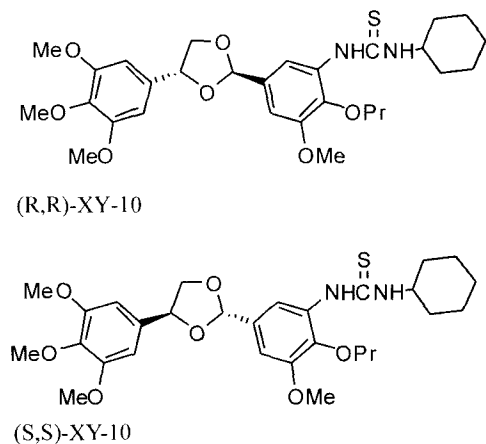


Figure 1 Chemical structures of (R,R)-XY-10 and (S,S)-XY-10

counting cells using trypan blue exclusion and simultaneously performing the MTT assay on cells seeded at identical densities established a standard curve of A570 vs. cell number. The photographs were captured with Olympus DP Controller (Olympusoptical Co., LTD, Japan).

Effect of Inhibitors RPE cells were washed and changed with fresh DMEM-F12 medium were added proliferative inhibitors such as H-7 (PKC inhibitor), Hypericin (MAPK inhibitor), PD98059 (ERK inhibitor), LY294002 (PI3K inhibitor), SH-5 (Akt inhibitor) and L-NAME (NOS inhibitor) in medium containing various concentrations of (R,R)-XY-10 and (S,S)-XY-10 for 24 hours incubation at 37°C incubator. Reactions were stopped by washing out the medium and 5g/L MTT at dilution of 1:10 base on the volume of culture medium was added for 3 hours at 37°C. At the end of incubation, the MTT solution was removed, and the cells were dissolved in 0.1 ml/well DMSO. The proportion viable cells was determined by measuring the absorbance (A) of each sample at 570 nm using a SpectraCount plate reader (Packard BioScience, Meridan, CT).

Statistical Analysis All data were presented as mean \pm standard errors (SEM). A nonpaired Student's *t*-test was performed to analyze the significance between two means at a certain time point. The differences were considered significant if $P < 0.05$.

RESULTS

Effect of (R,R)-XY-10 and (S,S)-XY-10 on ARPE-19 Cells (R,R)-XY-10 and (S,S)-XY-10 concentration-dependently induced cell proliferation at 24 and 48 hours. The maximum increase of viability at 100mg/L was $127.0\% \pm 2.2\%$ ($P < 0.01$) and $121.8\% \pm 2.2\%$ ($P < 0.01$), respectively with (R,R)-XY-10, and $115.9\% \pm 1.6\%$ ($P < 0.01$) and $87.9\% \pm 5.8\%$, respectively with (S,S)-XY-10. The increasing potency of (R,R)-XY-10 was higher than (S,S)-XY-10 (Figure 2).

Effects of (R,R)-XY-10 and (S,S)-XY-10 on HUVECs (R,R)-XY-10 and (S,S)-XY-10 did not induce cell proliferation either at 24 or 48 hours (Figure 3). The viability at 100mg/L was $82.2\% \pm 0.6\%$ and $82.5\% \pm 0.6\%$, respectively with (R,R)-XY-10, and $85.9\% \pm 1.4\%$ and $88.1\% \pm 0.7\%$, respectively with (S,S)-XY-10.

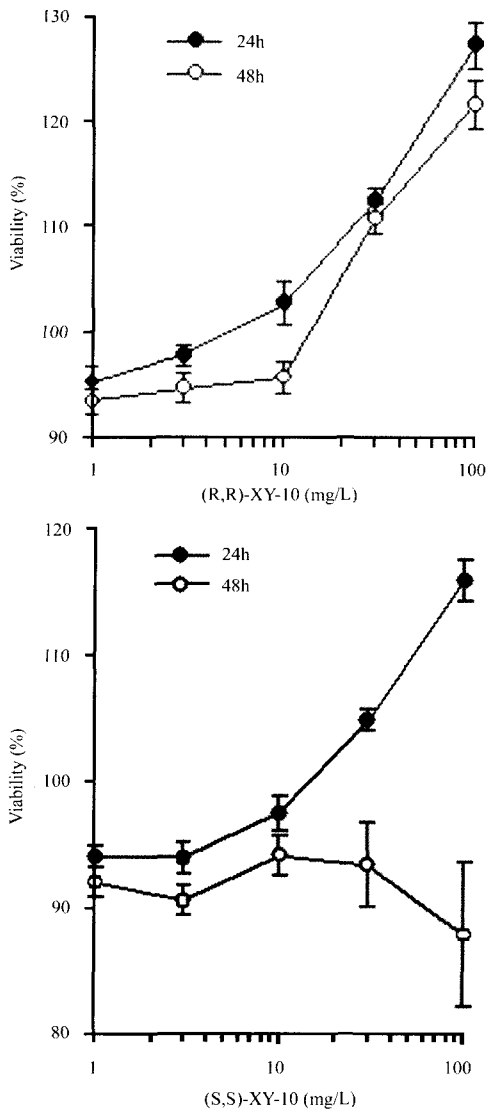


Figure 2 Effect of (R,R)-XY-10 and (S,S)-XY-10 on ARPE-19 cells (MTT assay, mean ± SEM, n = 6)

Effects of Inhibitors (R,R)-XY-10 and (S,S)-XY-10 dose-dependently increased cell proliferation in H₂O and DMSO treated ARPE-19 cells, H-7 (PKC inhibitor), Hypericin (MAPK inhibitor), PD98059 (ERK inhibitor), LY294002 (PI3K inhibitor) significantly inhibited (R,R)-XY-10 induced cell proliferation especially at higher concentration of 100mg/L (Figure 4A). SH-5 and L-NAME did not affect the cell survival (Figure 4A). H-7 (PKC inhibitor), Hypericin (MAPK inhibitor) and LY294002 (PI3K inhibitor) significantly inhibited (R,R)-XY-10 induced cell proliferation especially at higher concentration of 100mg/L. PD98059, SH-5 and L-NAME did not affect the cell survival (Figure 4B).

DISCUSSION

It is known that deficiencies of the retinal epithelium are pivotal in development of certain eye diseases. This is in agreement with the concept that the loss of RPE cells is the main reason during the early phase of AMD [17]. Previous studies on transplantation of healthy isolated RPE cells in humans have shown to increase cell numbers and rescue photoreceptors or even prevent further visual loss [18,19]. Therefore, adequate proliferation of RPE cell is probably to

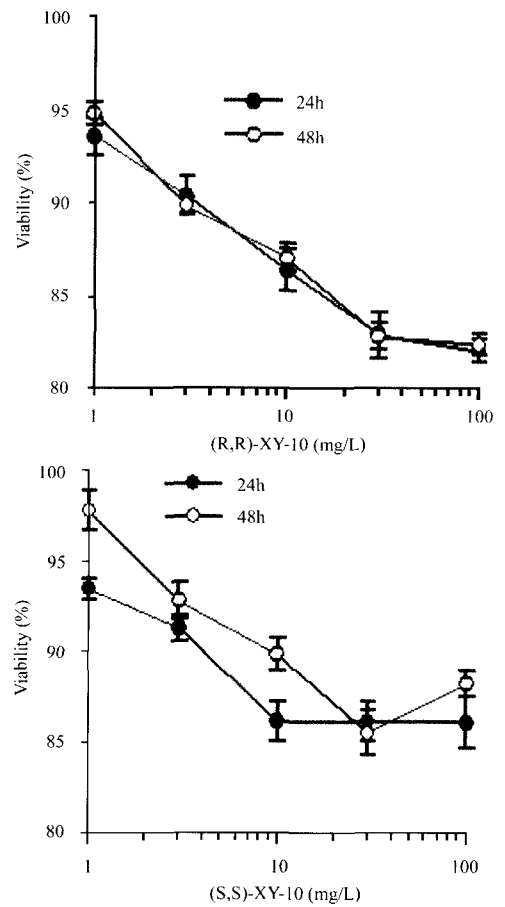


Figure 3 Effect of (R,R)-XY-10 and (S,S)-XY-10 on HUVEC (MTT assay, mean ± SEM, n = 6)

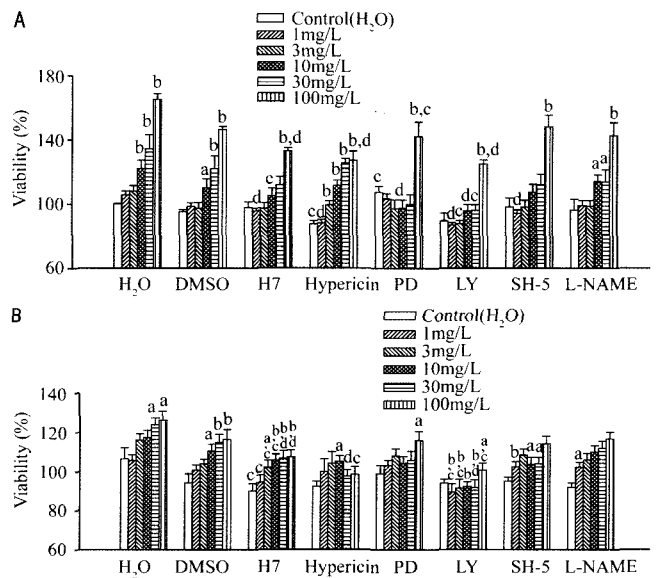


Figure 4 Effects of inhibitors on ARPE-19 cell proliferation A: (R,R)-XY-10 ;B: (S,S)-XY-10; (MTT assay, mean ± SEM, n = 6), ^aP < 0.05, ^bP < 0.01 vs control ; ^cP < 0.05, ^dP < 0.01 vs H₂O or DMSO control

increase wound healing of compromised retinal pigment epithelium in atrophic AMD [20]. In addition, replacing diseased RPE with healthier RPE can rescue photoreceptors, prevent further visual loss, or even promote visual improvement [19, 21, 22].

In our study, we found that (R,R)-XY-10 and (S,S)-XY-

10 dose-dependently induced proliferation on ARPE-19 cells, but not HUVECs, indicating this effect was cell specific. When treated with proliferative inhibitors such as H-7 (PKC inhibitor)、Hypericin (MAPK inhibitor)、PD98059 (ERK inhibitor) and LY294002 (PI3K inhibitor), they significantly inhibited (R,R)-XY-10 induced cell proliferation, and (S,S)-XY-10 induced proliferation also reduced by H-7 (PKC inhibitor)、Hypericin (MAPK inhibitor)、and LY294002 (PI3K inhibitor), indicating the involvement of MAPK and PI3K signaling pathway.

In RPE cells, MAPK has been suggested to be associated with promotion of cell migration, ERK 1/2 activity is essential for RPE cell proliferation and involves the sequential phosphorylation of Ras/Raf/MEK/ERK 1/2^[23,24]. The reduction in proliferation coincided with reduced activation of ERK 1/2 and its upstream activator ERK, the inhibition effect of Hypericin in both (R,R)-XY-10 and (S,S)-XY-10, suggesting that activation of ERK involved in (R,R)-XY-10 and (S,S)-XY-10 induced cell proliferation. Moreover, the PI3K-Akt pathway is involved in all cell responses investigated (production of VEGF, cell migration, and proliferation). Inhibition of this pathway maybe a promising method to block RPE cell responses in proliferative retinopathies. Our data show that when pretreated with LY294002 (PI3K inhibitor) it also can inhibit both (R,R)-XY-10 and (S,S)-XY-10 induced cell proliferation, indicating the involvement of PI3K in this effect. On the other hand, not all proliferative effect on retinal cells are desired in physiological conditions, such as endothelial cell proliferation mediated angiogenesis is the initiating and leading to neovascularization. Our data suggested that (R,R)-XY-10 and (S,S)-XY-10 induced proliferation only on ARPE-19 cells but not on HUVECs.

Throughout lifetime, RPE cells are not only constantly under various burdens especially reactive-oxygen intermediates generated by phagocytosis of photoreceptors and the resultant lipid peroxidation of polyunsaturated fatty acid, but also have a very low turnover rate^[25]. On this concept, we try to approach another method to improve the damaged RPE cell different from transplantation or surgery.

We concluded, (R,R)-XY-10 and (S,S)-XY-10 can induce ARPE-19 cells proliferation on ARPE-19 cells but not HUVECs, and this effect might be through the MAPK and PI3K pathways. Although, the intracellular signaling involved in proliferative-mediated RPE cells survival is still poorly understood, however, searching the chemicals involved in either proliferative or recovery effect in RPE cells should allow the future development of therapeutic strategies against AMD. (R,R)-XY-10 and (S,S)-XY-10 have the potential on improving the RPE cells damaged through activated MAPK and PI3K pathway, and could be considered for the treatment of AMD and damaged RPE cells.

Acknowledgement: We thank the support of The Topnotch

Stroke Center of Taipei Medical University, Taipei Taiwan.

REFERENCES

- 1 Steinberg RH, Wood I. The relationship of the retinal pigment epithelium; in Zin K. M. Marmor, M. F. (eds): The retinal pigment epithelium. Cambridge, Mass, Harvard University Press 1979;205-225
- 2 Basinger SF, Hoffman RT. Biochemistry of the pigment epithelium; in Anderson RE (eds): Biochemistry of the eye. San Francisco, American Academy of Ophthalmology Manuals Program 1983;256-264
- 3 Augustin AJ, Hunt S, Breipohl W, Boker T, Spitznas M. Influence of oxygen free radicals and free radical scavengers on the growth behaviour and oxidative tissue damage of bovine retinal pigment epithelium cells *in vitro*. *Graefes Arch Exp Ophthalmol* 1996;234:58-63
- 4 Zarbin MA. Current concepts in the pathogenesis of age-related macular degeneration. *Arch Ophthalmol* 2004;122(4):598-614
- 5 Harper FH, Liversidge J, Thomson AW. Interphotoreceptor retinoid binding protein induced experimental autoimmune uveitis: An immunophenotypic analysis using alkaline phosphatase anti-alkaline phosphatase staining, dual immunofluorescence and confocal microscopy. *Curr Eye Res* 1992;11:129-134
- 6 Charteris DC, Hiscott P, Grierson I, Lightman SL. Proliferation vitreoretinopathy. Lymphocytes in Epiretinal membranes. *Ophthalmology* 1992;99(9):1364-1367
- 7 Lopez PF, Grossniklaus HE, Lambert HM. Pathologic features of surgically excised subretinal neovascular membranes in Age-related macular degeneration. *Am J Ophthalmol* 1991;112(6):647-656
- 8 Nowak JZ. Age-related macular degeneration (AMD): pathogenesis and therapy. *Pharmacol Reports* 2006;58(3):353-363
- 9 Dunaief JL. Iron induced oxidative damage as a potential factor in age-related macular degeneration. *Invest Ophthalmol Vis Sci* 2006;47(11):4660-4664
- 10 Pearson G, Robinson F, Beers Gibson T, Xu BE, Karandikar M, Berman K, Cobb MH. Mitogen-activated protein (MAP) kinase pathways: regulation and physiological functions. *Endocr Rev* 2001;22(2):153-183
- 11 Thomas GM, Huganir RL. MAPK cascade signaling and synaptic plasticity. *Nat Rev Neurosci* 2004;5(3):173-183
- 12 Chang L, Karin M. Mammalian MAP kinase signaling cascades. *Nature* 2001;401(6824):37-40
- 13 Vivanco I, Sawyers CL. The phosphatidylinositol 3-kinase AKT pathway in human cancer. *Nat Rev Cancer* 2002;2:489-501
- 14 Morgan DMI. Isolation and culture of human umbilical vein endothelial cells. In "Human Cell Culture Protocols" (Gareth E. Jones, eds.) Human Press, Totowa, New Jersey 1996;104-109
- 15 Newman PJ, Berndt MC, Gorski J, White GC 2nd, Lyman S, Paddock C, Muller WA. PECAM-1 (CD31) cloning and relation to adhesion molecules of the immunoglobulin gene superfamily. *Science* 1990;247(4947):1219-1222
- 16 Mossman T. Rapid colorimetric assay for cellular growth and survival: application to proliferation and cytotoxicity assays. *J Immunol Methods* 1983;65(1-2):55-63
- 17 Cai J, Nelson KC, Wu M, Sternberg P Jr, Jones DP. Oxidative damage and protection of the RPE. *Prog Retin Eye Res* 2000;19(2):205-221
- 18 van Meurs JC, ter Averst E, Hofland LJ, van Hagen PM, Mooy CM, Baarsma GS, Kuijpers RW, Boks T, Stalmans P. Autologous peripheral retinal pigment epithelium translocation in patients with subfoveal neovascular membranes. *Br J Ophthalmol* 2004;88(1):110-113
- 19 Wong D, Stanga P, Briggs M, Lenfestey P, Lancaster E, Li KK, Lim KS, Groenewald C. Groenewald, C. Case selection in macular relocation surgery for age related macular degeneration. *Br J Ophthalmol* 2004;88(2):186-190

- 20 Xu KP, Yu FS. Cross talk between c-Met and epidermal growth factor receptor during retinal pigment epithelial wound healing. *Invest Ophthalmol Vis Sci* 2007;48(5):2242-2248
- 21 Del Priore LV, Tezel TH, Kaplan H. Survival of allogeneic porcine retinal pigment epithelial sheets after subretinal transplantation. *Invest Ophthalmol Vis Sci* 2004;45:985-992
- 22 Coffey PJ, Girman S, Wang SM, Hetherington L, Keegan DJ, Adamson P, Greenwood J, Lund RD. Long-term preservation of cortically dependent visual function in RSC rats by transplantation. *Nat Neurosci* 2002;5(1):53-56
- 23 Zoberi I, Bradbury CM, Curry HA, Bisht KS, Goswami PC, Roti JL, Gius D. Radiosensitizing and antiproliferative effects of resveratrol in two human cervical tumor cell lines. *Cancer Lett* 2004;175:165-173
- 24 Roth S, Shaikh AR, Hennelly MM, Li Q, Bindokas V, Graham CE. Mitogen-activated protein kinase and retinal ischemia. *Invest Ophthalmol Vis Sci* 2003;44(12):5383-5395
- 25 Korte GE, Perlman JI, Pollack A. Regeneration of mammalian retinal pigment epithelium. *Int Rev Cytol* 1994;152:223-263

(R, R)-XY-10 和 (S, S)-XY-10 诱导的视网膜色素上皮细胞增生作用及其作用机制

Yu-Wen Cheng¹, 王玉良², 张奕华², 彭司勳², George C Y Chiou¹

(作者单位:¹美国德州大学城,德州农工大学医学院,眼科药理学研究所;²210009 中国江苏省南京市,中国药科大学新药研究中心)

通讯作者:George C Y Chiou. 美国德州大学城,德州农工大学医

学院,眼科药理学研究所. Chiou@medicine. temhsc. edu

摘要

目的:观察(R, R)-XY-10 和(S, S)-XY-10 对视网膜色素上皮细胞的增生作用,并且进一步的研究其作用机制。但(R, R)-XY-10 和(S, S)-XY-10 对人脐静脉内皮细胞并无增生的作用。

方法:通过人视网膜色素上皮细胞(ARPE-19)和人脐静脉内皮细胞(HUVECs)研究(R, R)-XY-10 和(S, S)-XY-10 对视网膜色素上皮细胞的增生作用,并且采用 ERK、KT、PI3K、蛋白激酶 C(PKC)和一氧化氮合酶(NOS)抑制剂来研究其作用机制。

结果:(R, R)-XY-10 和(S, S)-XY-10 促进了 ARPE-19 细胞的增生,并具有剂量依赖性,但是对 HUVECs 细胞没有影响。如果同时加入增生抑制剂 H7 (5 μ mol/L)、金丝桃素(20 μ mol/L)、PD98059 (2 μ mol/L)、LY294002 (50 μ mol/L)、SH-5(10 μ mol/L)和 L-NAME (100 μ mol/L),则给予 H7、金丝桃素、PD98059 和 LY294002 各组的增生作用受到了抑制,而给予 SH-5 和 L-NAME 两组的增生作用没有影响。

结论:(R, R)-XY-10 和(S, S)-XY-10 能够诱导 ARPE-19 细胞增生,其作用可能是通过 MAPK 和 PI3K 的途径来发挥该作用。因此,(R, R)-XY-10 和(S, S)-XY-10 能通过修复损伤的 RPE 细胞来治疗老年性黄斑变性。

关键词:年龄相关性黄斑变性;(R, R)-XY-10; (S, S)-XY-10; ARPE-19 cells; 人脐静脉血管内皮细胞;增生